



A Furukawa Company

## EZ-Bend® 4.8 & 3.0 Ruggedized Stapleable Cables

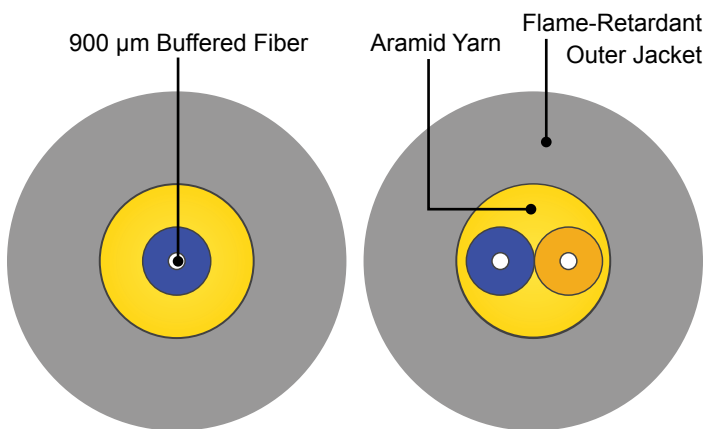
### Features

- 3.0 and 4.8 diameter ruggedized cordage
- Less than 0.1 dB macrobending attenuation at 1550 nm for 1 turn at 5 mm fiber bend radius
- Macrobending attenuation less than 0.3 dB/Riser version and 0.5 dB/LSZH version at 1550 nm when subjected to MDU Simulation Test called out by ICEA S-115-730
- Solid construction fiber with macrobending performance far better than ITU G.657.B3 requirements
- Backward compatible with installed G.652.D fibers
- Conform to UL® Riser and Plenum fire ratings
- Compliant with Telcordia 409 & ICEA S-83-596 requirements
- Dry water-blocked core to protect against water ingress
- Reinforced solid jacket construction naturally limits cable bending to control macrobending attenuation and protect fiber reliability

### Benefits

- **Staple friendly:** Ruggedized cords designed to allow common stapling methods
- **MDU and In-Home Optimized:** Ideal for in-residence wiring and difficult installation routes in MDU overbuilds
- **Faster, easier installation:** no extra steps to install bend limiters, conduits, or raceways
- **Compact installation and storage:** Conforms to building; slack fits in small spaces
- **Fast, easy, low loss splicing** to G.652.D fiber with existing core and clad aligned splice equipment
- **Familiar, standard connector termination:** Solid fiber construction can be terminated using standard optical connectors and polishing techniques
- **Familiar connector endface cleaning** using same process as with existing G.652 solid construction fiber
- **Greener Solution:** Free of heavy metals and RoHS-compliant; solution uses fewer total materials and energy than copper solutions

### EZ-Bend Ruggedized Optical Cable Cross-Sections



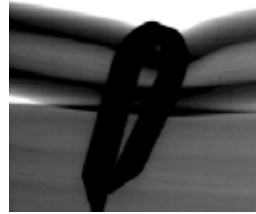
Simplex and Duplex\*\*

### Product Description

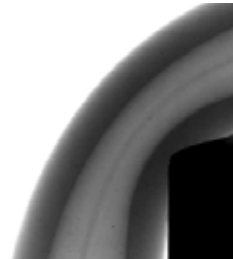
With the EZ-Bend® 3.0 Ruggedized Cables, users have expanded options for MDU, in-home wiring and aggressive, space-constrained routing environments. When a low profile and durability are needed, select the 3.0 mm product. For more demanding deployments, the EZ-Bend 4.8 Ruggedized Cable is ideal. EZ-Bend cables are offered in indoor/outdoor, riser, plenum, and dual-rated low-smoke zero-halogen (LSZH) constructions. These cables can be routed around corners and stapled using traditional fast and easy installation practices, with negligible signal loss.

Performance	
Flame Performance	
<b>Riser</b>	UL 1666 compliant
<b>Plenum</b>	NFPA 262 (UL 910) compliant
<b>Dual Rated</b>	UL 1666 and CPR Rated
<b>Non-Halogen</b>	CPR Rated (See Table)
Mechanical and Environmental Performance	
Telcordia GR-409, ICEA S-83-596 compliant	
Temperature Range	
<b>Installation</b>	0 °C to 40 °C (32 °F to 104 °F)
<b>Operation</b>	-40 °C to 70 °C (-40 °F to 158 °F)
<b>Storage</b>	-40 °C to 70 °C (-40 °F to 158 °F)
Maximum Tensile Rating	
440 N (100 lb)	
Attenuation	
<b>@ 1310 nm</b>	Typical: 0.35 dB/km; Maximum: 0.4 dB/km
<b>@ 1550 nm</b>	Typical: 0.25 dB/km; Maximum: 0.3 dB/km

### X-Ray of Bent and Stapled EZ-Bend 4.8 Optical Cable



**Aggressive Stapling:**  
19 mm bend radius for fiber  
(minimal bending)



90 degree bend, stapled 3/4"  
from corner: 5 lb tension, 5.5  
mm fiber bend radius

Product Information					
Indoor/Outdoor	Riser		Riser/CPR (LSZH)		CPR (LSZH)
<b>Cable Outer Diameter - mm (in.)</b>	3.0 (0.12)	4.8 (0.19)	4.8 (0.19)	4.8 (0.19)	3.0 (0.12)
<b>Cable Weight</b>	7.60 (0.51)	22.0 (1.48)	22.9 (1.53)	22.9 (1.53)	7.60 (0.51)
<b>Version</b>	C	D	E	E	A
<b>Fiber Count</b>	1	1	1	2	1
<b>DOP Lookup</b>			<b>IO48-E-D</b>	<b>LGIO-E-D</b>	<b>IR30-A-H</b>
<b>CPR Rating</b>			Fca	Dca-s1, d2, a1	Dca-s1, d0, a1
<b>Flame Rating</b>	OFNR	OFNR	OFNR/CPR	OFNR/CPR	OFNR/CPR
<b>Descriptor Black</b>	IR30-001C-DRK-4-WPVC	IO48-001D-DRK-4-WPVC	IO48-001E-DDK-4-UVB	LGIO-002E-DDK-4-4.8mm	IR30-001A-DHK-4-UVB
<b>Descriptor White</b>	IR30-001C-DRW-4-WPVC	IO48-001D-DRW-4-WPVC	IO48-001E-DDW-4-UVB	N/A	IR30-001A-DHW-4-UVB
Indoor Only	Plenum				
<b>Cable Outer Diameter - mm (in.)</b>	4.8 (0.19)				
<b>Cable Weight</b>	24.5 (1.65)				
<b>Version</b>	D				
<b>Fiber Count</b>	1				
<b>Descriptor White</b>	9P48-001D-DPW-4				

\* Dual-Rated Cables are rated for both riser and LSZH application use.

#### Example of Standard Sheath Marking (Custom sheath marking available upon request)

Black-Jacketed Riser-Rated 4.8 Ruggedized I/O Cable with EZ-Bend Technology:

OFS INTERCONNECT EZ-BEND® G.657.B3 OPTICAL CABLE -C- IO48-001D-DRK-4-WPVC 9/125 C (UL) US TYPE OFNR [CSA OFN FT4] {MM/YY} {LOT NUMBER} {LENGTH IN FEET}

**For additional information please contact your sales representative.**

You can also visit our website at [www.ofsoptics.com](http://www.ofsoptics.com) or call 1-888-fiberhelp (1-888-342-3743) USA or 1-770-798-5555 outside the USA.



Copyright © 2019 OFS Fitel, LLC.  
All rights reserved, printed in USA.

OFS Marketing Communications  
Doc ID: fap-251 Date: 07/19



EZ-Bend is a registered trademark of OFS Fitel, LLC. UL is a registered trademark of Underwriters Laboratories, Inc. OFS reserves the right to make changes to the prices and product(s) described in this document at any time without notice. This document is for informational purposes only and is not intended to modify or supplement any OFS warranties or specifications relating to any of its products or services.