



A Furukawa Company

SlimBox™ Indoor Splice Module

Indoor Module for Splice Transition Inside the Living Unit



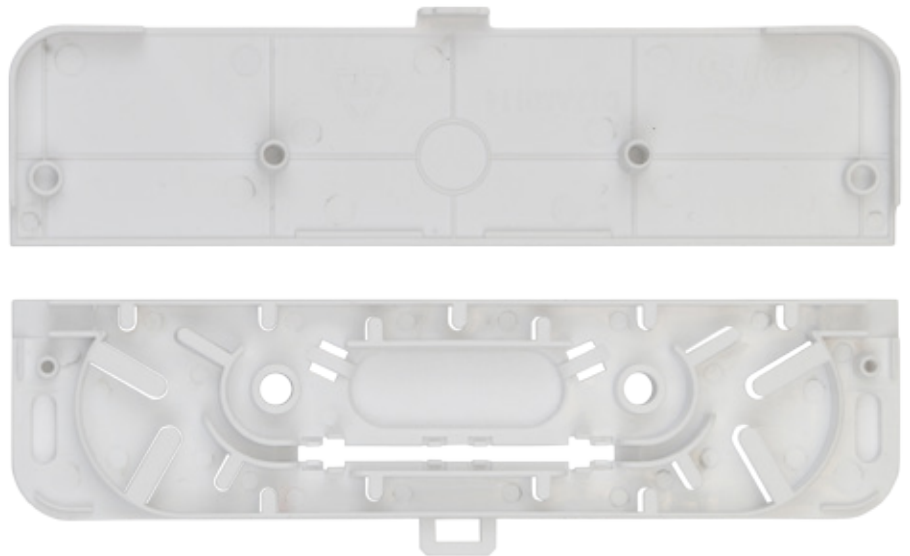
Key Features

- Discrete and flush installation on the wall due to the compact size
- Accepts one mechanical or fusion splice
- Compatible with cable up to a 5.0 mm outside diameter

Product Description

The SlimBox Splice Module is a compact indoor transition point for one mechanical or fusion splice. It allows extending the optical fiber path from an indoor/outdoor to an indoor cable.

It may be used as a splice repair module. Inline entrance and exit accept cable or subunit OD up to 5.0 mm. The module has internal routing and management space for 250 or 900 μm optical fiber.





A Furukawa Company

SlimBox™ Indoor Splice Module

SlimBox Indoor Splice Module Specifications	
Product Characteristics	
Splice Capacity	1
Splice Type	Mechanical or fusion
Fiber Type	250 or 900 μm
Physical Characteristics	
Terminal Dimensions (L x H x D)	4.63 in. x 1.27 in. x 0.28 in. (117.5 mm x 32.3 mm x 7.0 mm)
Body Color	White
Operating Temperature	-40 °C to +85 °C
Storage Temperature	-40 °C to +85 °C
Material	Polypropylene

SlimBox Indoor Splice Module Ordering Information		
Comcode	Product Code	Description
301145769	SLIMBOX-H, INDOOR, SPLICE, 01 FIBER MODULE	Indoor module with accessories for wall installation

For additional information please contact your sales representative.

You can also visit our website at www.ofsoptics.com or call 1-888-fiberhelp (1-888-342-3743) USA or 1-770-798-5555 outside the USA.



Copyright © 2018 OFS Fitel, LLC.
All rights reserved, printed in USA.

OFS Marketing Communications
Doc ID: fap-315 Date: 03/18

SlimBox is a trademark of OFS Fitel, LLC.



OFS reserves the right to make changes to the prices and product(s) described in this document at any time without notice. This document is for informational purposes only and is not intended to modify or supplement any OFS warranties or specifications relating to any of its products or services.