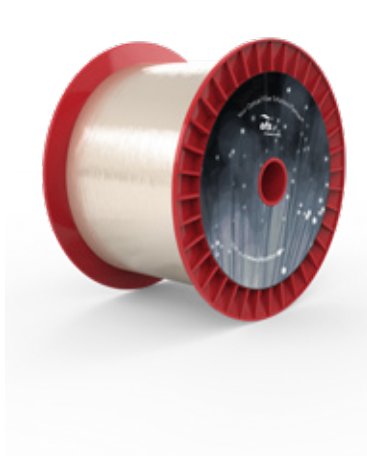




# Micro Connect Single-Mode Optical Fiber

P/N 88951



## Product Specifications

Product Description	Micro Connect 80-135 Bend Insensitive SMF		
---------------------	---	--	--

### Optical Properties

Operating Wavelength	1310 nm	1550 nm	1625 nm
Attenuation	≤ 0.50 dB/km	≤ 0.30 dB/km	≤ 0.50 dB/km
Mode field diameter	8.6 ± 0.6 μm	9.6 ± 0.5 μm	9.6 ± 0.5 μm
Cable Cut-off Wavelength	≤ 1260 nm	≤ 1260 nm	≤ 1260 nm
Macrobend performance (1 turn @ 5 mm radius)	≤ 0.1 dB	≤ 0.1 dB	≤ 0.25 dB

### Physical Properties

Cladding Diameter	80 ± 1.0 μm
Core/Clad Concentricity Error	≤ 0.5 μm
Coating Diameter	135 ± 5 μm
Tensile Proof Test	1.38 GPa

### Environmental Characteristics

Order by Part Number	88951
----------------------	-------

Product Description	Micro Connect 80-135 SMF
---------------------	--------------------------

Regulatory Compliance	REACH and RoHS Compliant
-----------------------	--------------------------

Quality Certification	ISO 9001 Certified
-----------------------	--------------------

**For additional information please contact your sales representative.**

You can also visit our website at [www.ofsoptics.com](http://www.ofsoptics.com)  
or call 1-888-fiberhelp (1-888-342-3743) USA or 1-770-798-5555 outside the USA.



**FURUKAWA**  
SOLUTIONS

Copyright © 2024 OFS Fitel, LLC.  
All rights reserved, printed in USA.

OFS Marketing Communications  
Date: 02/24

For a full list of  
our certifications,  
visit our website.



OFS reserves the right to make changes to the prices and product(s) described in this document at any time without notice. This document is for informational purposes only and is not intended to modify or supplement any OFS warranties or specifications relating to any of its products or services.