



A Furukawa Company

EZ-Bend® 4.8 & 3.0 Ruggedized Stapleable Cables

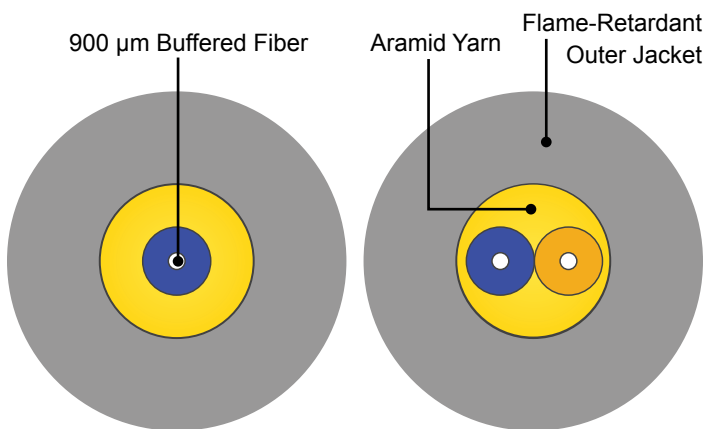
Features

- 3.0 and 4.8 diameter ruggedized cordage
- Less than 0.1 dB macrobending attenuation at 1550 nm for 1 turn at 5 mm fiber bend radius
- Macrobending attenuation less than 0.3 dB/Riser version and 0.5 dB/LSZH version at 1550 nm when subjected to MDU Simulation Test called out by ICEA S-115-730
- Solid construction fiber with macrobending performance far better than ITU G.657.B3 requirements
- Backward compatible with installed G.652.D fibers
- Conform to UL® Riser and Plenum fire ratings
- Compliant with Telcordia 409 & ICEA S-83-596 requirements
- Dry water-blocked core to protect against water ingress
- Reinforced solid jacket construction naturally limits cable bending to control macrobending attenuation and protect fiber reliability

Benefits

- **Staple friendly:** Ruggedized cords designed to allow common stapling methods
- **MDU and In-Home Optimized:** Ideal for in-residence wiring and difficult installation routes in MDU overbuilds
- **Faster, easier installation:** no extra steps to install bend limiters, conduits, or raceways
- **Compact installation and storage:** Conforms to building; slack fits in small spaces
- **Fast, easy, low loss splicing** to G.652.D fiber with existing core and clad aligned splice equipment
- **Familiar, standard connector termination:** Solid fiber construction can be terminated using standard optical connectors and polishing techniques
- **Familiar connector endface cleaning** using same process as with existing G.652 solid construction fiber
- **Greener Solution:** Free of heavy metals and RoHS-compliant; solution uses fewer total materials and energy than copper solutions

EZ-Bend Ruggedized Optical Cable Cross-Sections



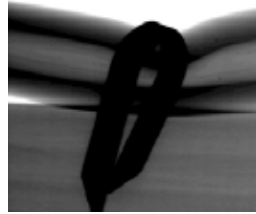
Simplex and Duplex**

Product Description

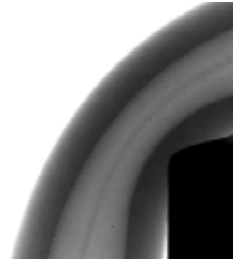
With the EZ-Bend® 3.0 Ruggedized Cables, users have expanded options for MDU, in-home wiring and aggressive, space-constrained routing environments. When a low profile and durability are needed, select the 3.0 mm product. For more demanding deployments, the EZ-Bend 4.8 Ruggedized Cable is ideal. EZ-Bend cables are offered in indoor/outdoor, riser, plenum, and dual-rated low-smoke zero-halogen (LSZH) constructions. These cables can be routed around corners and stapled using traditional fast and easy installation practices, with negligible signal loss.

Performance	
Flame Performance	
Riser	UL 1666 compliant
Plenum	NFPA 262 (UL 910) compliant
Dual Rated	UL 1666 and IEC 60332-3C
Non-Halogen	IEC 60332-3C and IEC 61034-2 compliant
Mechanical and Environmental Performance	
Telcordia GR-409, ICEA S-83-596 compliant	
Temperature Range	
Installation	0 °C to 40 °C (32 °F to 104 °F)
Operation	-40 °C to 70 °C (-40 °F to 158 °F)
Storage	-40 °C to 70 °C (-40 °F to 158 °F)
Maximum Tensile Rating	
440 N (100 lb)	
Attenuation	
@ 1310 nm	Typical: 0.35 dB/km; Maximum: 0.4 dB/km
@ 1550 nm	Typical: 0.25 dB/km; Maximum: 0.3 dB/km

X-Ray of Bent and Stapled EZ-Bend 4.8 Optical Cable



Aggressive Stapling:
19 mm bend radius for fiber (minimal bending)



90 degree bend, stapled 3/4" from corner: 5 lb tension, 5.5 mm fiber bend radius

Product Information				
Cable Type	Descriptors	Nominal Weight kg/km (lb/100 ft)	CPR Rating	DoP Lookup: www.ofs-sales.com/cpr/
Indoor/Outdoor Cables				
3.0 Indoor/Outdoor Riser	IR30-001C-DRK-4-WPVC	7.60 (0.51)		
4.8 Indoor/Outdoor Riser	IO48-001D-DRK-4-WPVC	22.0 (1.48)		
3.0 Indoor/Outdoor Non-Halogen	IR30-001A-DHK-4-UVB	7.60 (0.51)	Dca-s1, d0, a1	IR30-001-A-H
4.8 Dual-Rated* Indoor/Outdoor LSZH	IO48-001E-DDK-4-UVB	22.9 (1.53)	Fca	IO48-001-E-D
	LGIO-002E-DDK-4-4.8mm** Duplex only available as dual rated	22.9 (1.53)	Dca-s1, d1, a1	LGIO-002-E-D
Indoor Cables				
4.8 Indoor Plenum	9P48-001D-DPW-4	24.5 (1.65)		
4.8 Dual-Rated* Indoor LSZH	9U48-001E-DDW-4	24.8 (1.67)	Fca	9U48-001-E-D

* Dual-Rated Cables are rated for both riser and LSZH application use.

NOTE: Standard color for indoor cables is a white jacket. Standard color for indoor/outdoor cables is a black jacket. Please note that other jacket colors are available upon customer request.

Example of Standard Sheath Marking (Custom sheath marking available upon request)

Black-Jacketed Riser-Rated 4.8 Ruggedized I/O Cable with EZ-Bend Technology:

OFS INTERCONNECT EZ-BEND® G.657.B3 OPTICAL CABLE -C- IO48-001D-DRK-4-WPVC 9/125 C (UL) US TYPE OFNR [CSA OFN FT4] {MM/YY} {LOT NUMBER} {LENGTH IN FEET}

For additional information please contact your sales representative.

You can also visit our website at www.ofsoptics.com or call 1-888-fiberhelp (1-888-342-3743) USA or 1-770-798-5555 outside the USA.



Copyright © 2018 OFS Fitel, LLC.
All rights reserved, printed in USA.

OFS Marketing Communications
Doc ID: fap-251 Date: 10/18



EZ-Bend is a registered trademark of OFS Fitel, LLC. UL is a registered trademark of Underwriters Laboratories, Inc. OFS reserves the right to make changes to the prices and product(s) described in this document at any time without notice. This document is for informational purposes only and is not intended to modify or supplement any OFS warranties or specifications relating to any of its products or services.