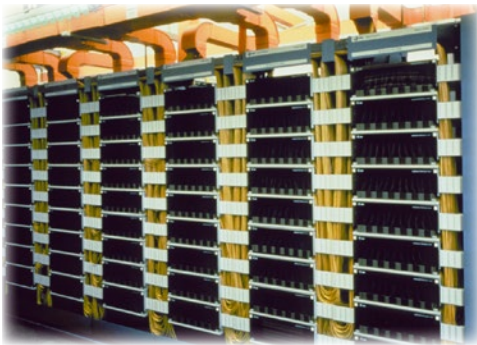




A Furukawa Company

LGX[®] Frame Accessories

Optical Fiber Management System Suited for High-Density Applications



LGX Frame

Features

- 19- and 26-inch ANSI or 300 mm ETSI widths
- 12-, 15-, 18-, and 24-inch depths
- Network or Seismic (Zone 0-4) rated
- Telcordia (GR 449) tested and approved
- 64 sq inches vertical trough area/bay
- 80 sq inches horizontal raceway area/bay
- Accommodates up to 36, 1/2-inch diameter OSP cables
- Mounting kits for network, seismic, concrete, and raised floors

Benefits

- Designed for flexibility
- Optimizes space
- Simplifies installation and service
- Secures connectors and cables
- Improves organization and storage

Applications

- High-density applications where a large number of fibers are terminated
- Ideal for Services Providers, Cable TV, Private Network, and Enterprise applications
- Central offices

Product Description

The LGX fiber optic distributing frame and fiber optic shelves provide termination and service access points for high-density fiber optic circuits. Our enhanced design provides a flexible interface between fiber optic transmission facilities and fiber optic equipment, by allowing a user to cross connect fiber cables to equipment by means of short jumpers, or interconnect to the equipment with longer length jumpers. The LGX frame is unique and highly efficient because all jumpers are administered on a front-facing field. With OFS modular LGX frames in your central fiber hub, you can stay ahead of the future.

Standard LGX Distributing Frames

The LGX frame hardware groups are designed to provide convenient ordering kits for field assembly into an LGX frame. The groups can be selected to configure a complete LGX Frame or to supply only those parts necessary to convert an existing bay frame into an LGX frame. Duct doors for the rear of the frame and end guards to dress up the lineup ends are addition groups which can be ordered.

The frame groups are available in 12-inch (305 mm) or 15-inch (381 mm) depth footprints. Frames are 26-inch wide (660 mm) by 84-inches tall (2.1 m). All frame groups come equipped with either a network or seismic floor mounting kit.

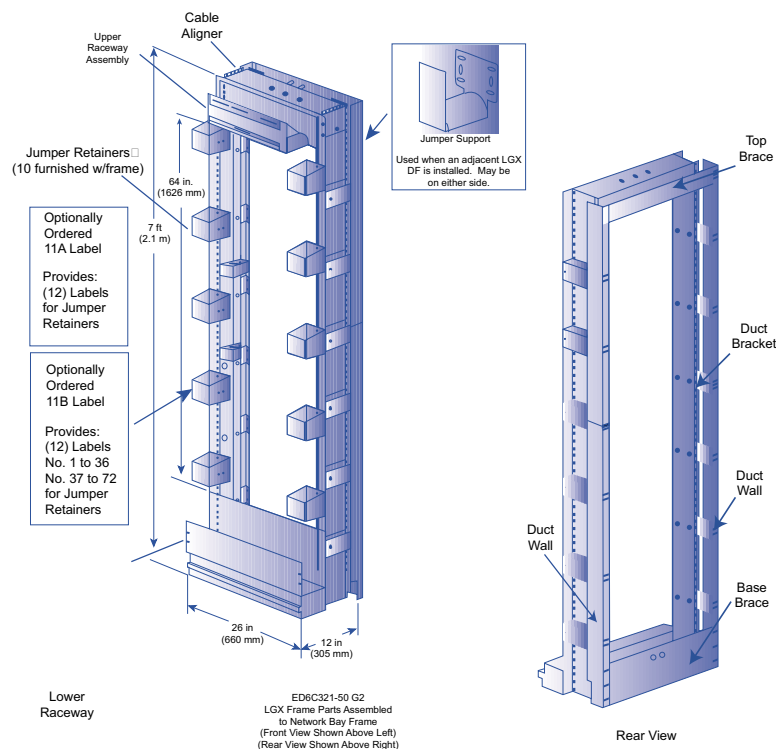
Ordering Information

12-inch (305 mm)

Comcode	Description	Product	Comments
601248354	ED6C321-50-G2	12" Frame Parts	No frame, 12" rear ducts wall, 12" rear duct brackets, horizontal troughs, vertical jumper retainers, fasteners/hardware
601248404	ED6C321-50-G3	Rear Doors	One set of rear doors
601248388	ED6C321-50-G4	12" End Guard	One 12" end guard.
601373178	ED6C321-50-G5	12" Duct Walls	12" duct wall upper L&R, 12" duct wall lower L&R, top brace, base brace, 12 duct brackets

15-inch (381 mm)

Comcode	Description	Product	Comments
601835713	ED6C321-50-G7	15" Frame Parts	No frame, 15" rear ducts wall, 15" rear duct brackets, horizontal troughs, vertical jumper retainers
601835721	ED6C321-50-G8	15" End Guard	One 15" end guard





A Furukawa Company

LGX® Frame Fiber Management System

LGX Frame Accessories

A variety of supplemental LGX frame accessories are available to customize the LGX standard or preassemble frames to specific customer applications.

Ordering Information			
Comcode	Description	Product	Comments
106929961	FEX1A-FB	3" Frame Extenders	Used on the rear of the frame to convert 12" to 15" deep frames.
104411277	JR1A	Jumper Retainer for 19" racks	Narrow jumper retainer brackets for data rack applications. (One pair)
104436092	JR2A	Jumper Retainer for 26" racks	A 3-1/2" wide jumper retainer bracket for shelf applications (One pair)
104436084	11A LABELS	Sticky labels for JR2A, set of 12	Provides 12 labels for the JR2A (2 spare labels).
106518327	CR1A	Cable Retainer used in Duct Walls	Use with GP5 duct walls. (One pair)
106555360	CR1A-M	Cable Retainer used in Duct Walls	A modified CR1A to allow addition mounting height space. (One pair)
106574551	RU1A-23/5-6	Upper Raceway, 5"-6" Flanges	LGX upper raceway w/ 5" front flange and 6" rear flange. (One)
106574577	RL1A-23/5-9	Lower Raceway, 5"-9" Flanges	LGX lower raceway w/ 5" front flange and 9" rear flange. (One)
106555931	RU1A-23/5-3	Upper Raceway, 5"-3" Flanges	LGX upper raceway w/ 5" front flange and 3" rear flange. (One)
106555170	RL1A-23/5-5	Lower Raceway, 5"-5" Flanges	LGX lower raceway w/ 5" front flange and 5" rear flange. (One)
106565344	JR4A-1	Jumper Retainer	L and R hand jumper retainer with one extension flap. (One)
106565351	JR4A-9	Jumper Retainer, set of 9	L and R hand jumper retainer with one extension flap. (Nine)
106565369	JR4C-1	Jumper End Caps	L and R end cap to close off JR4A at frame end points (One)
106565377	JR4C-9	Jumper End Caps, set of 9	L and R end cap to close off JR4A at frame end points (Nine)
106565385	JR4E-9	Extensions between JR4As	Additional extension flap between the JR4A brackets. (Nine)
106574593	JS1A	Jumper Support between bays	Provides jumper support between bays. Anchors adjacent bays. (One)
107264707	Concrete Floor Mount Kit	Network/Seismic Concrete Floor Mounting Kit	Mount kit for network/seismic bay frames for concrete floor.
107264715	Raised Floor Mount Kit	Network/Seismic Raised Floor Mounting Kit	Mount kit for network/seismic bay frames for raised floor.
106192594	48A GUIDE	Cable Guide	Provides protection of jumpers crossing the top of frames (L & R pair)



A Furukawa Company

LGX® Frame Fiber Management System

LGX CATV Bay Accessories

A variety of supplemental LGX CATV Bay accessories are available to customize the LGX standard or preassemble frames to specific customer applications.

Ordering Information			
Comcode	Description	Product	Comments
107269888	Fiber Management Kit	Fiber Management kit.	Provides all the necessary equipment to route the jumpers from rear to front of frame.
107257958	24 LGX-UMP Kit	Universal Mounting Plate kit	A plate used to mount miscellaneous coax combiners and splitters on the rear of the frame.
107139180	24 LGX-VTTP Kit	Vertical Trough Trim Panel kit	Provides closure for the front vertical jumper troughs
107139255	24 LGX-LL2MK Kit	LL II Mtg. Bracket Assembly	Mount bracket used on 24-in deep FDBS when bay has LGX and equipment in the same bay
107221996	24 LGX-FP1 Kit	1.7-in Filler Panel	Filler panel to take up a 1.7-in gap on the front of the 24-in bay.
107222002	24 LGX-FP3 Kit	3.45-in Filler Panel	Filler panel to take up a 3.45-in gap on the front of the 24-in bay.
107222010	24 LGX-FP5 Kit	5.2-in Filler Panel	Filler panel to take up a 5.2-in gap on the front of the 24-in bay.
107225757	24 LGX-CCRK Kit	Coax Cable Routing Kit	Bracket used to support and organize coax cables on the rear of the 24-in bay.
107139222	24 LGX-PSK Kit	Power Strip Kit	An electrical outlet strip and bracket for use with EEBs.
107301178	24 LGX-BPLL2 Kit	8.75-in Filler Panel	Filler panel to take up a 8.75-in gap on the front of the 24-in bay.
107294258	24 LGX-JR5A-K Kit	JR45A Jumper Retainers	Two JR45A jumper retainers, two JR4C caps, and one 11A-type label.

For additional information please contact your sales representative.

You can also visit our website at www.ofsoptics.com or call 1-888-fiberhelp (1-888-342-3743) USA or 1-770-798-5555 outside the USA.



Copyright © 2017 OFS Fitel, LLC.
All rights reserved, printed in USA.

OFS Marketing Communications
DOC: fap-132 Date: 06/17



LGX is a registered trademark of OFS FITEL, LLC.

OFS reserves the right to make changes to the prices and product(s) described in this document at any time without notice. This document is for informational purposes only and is not intended to modify or supplement any OFS warranties or specifications relating to any of its products or services.