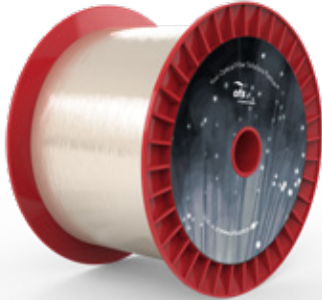


RightWave® Thulium Doped Optical Fiber for Fiber Lasers

P/N: 40910



Overview

The OFS family of RightWave rare-earth doped optical fibers includes a Thulium doped fiber with an absorption of 200 dB/m at 790 nm. The cladding of the fiber is photosensitive.

Typical Applications

DFB and DBR Lasers
Fiber Lasers and
Polarization-Maintaining
Amplifiers



A Furukawa Company

RightWave® Thulium Doped Optical Fiber

P/N: 40910

Product Specifications	
Product Description	RightWave Thulium Doped Optical Fiber
Physical Characteristics	
Cladding Diameter	125 µm
Coating Diameter	245 µm
Optical Characteristics	
Type	Other Doped Fibers
Cutoff Wavelength	1350 nm
Peak Absorption @ 790 nm	200 dB/m
Mode Field Diameter @ 1700 nm	5.0 µm
Numerical Aperture	0.26 ± 0.02
PM or SM	SM
Mechanical and Environmental	
Proof Test Level	2%
Order by Part Number	40910
OPTIONS: Coils, Colored or Natural Buffers, Custom Designs	

For additional information please contact your sales representative.

You can also visit our website at www.ofsoptics.com or call 1-888-fiberhelp (1-888-342-3743) USA or 1-770-798-5555 outside the USA.



Copyright © 2019 OFS Fitel, LLC.
All rights reserved, printed in USA.

OFS Marketing Communications
Date: 11/19



RightWave is a registered trademark of OFS Fitel, LLC. OFS reserves the right to make changes to the prices and product(s) described in this document at any time without notice. This document is for informational purposes only and is not intended to modify or supplement any OFS warranties or specifications relating to any of its products or services.