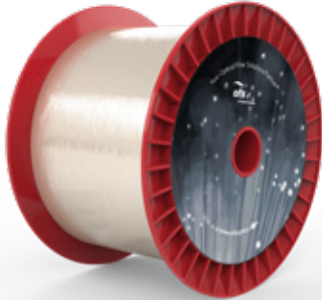


RightWave® EDF LPL 80 μm Optical Fiber

P/N: 76178



Overview

The RightWave EDF portfolio has a broad EDF product line with each fiber type optimized for different applications. Versions of the most widely used OFS EDF fibers are available with an 80 μm cladding diameter and are well-suited for compact amplifiers.

RightWave EDF LPL 80 is an 80 μm version of reduced length L-Band fiber, with reduced cladding designed for high efficiency, low noise figure, low nonlinear effects and spectral flatness in DWDM amplifiers as well as smaller bend radius needed for compact amplifier design.

Product Specifications	
Product Description	RightWave EDF LPL 80 µm Optical Fiber
Physical Characteristics	
Cladding Diameter	80 µm
Coating Diameter	165 µm
Core/Cladding Concentricity Error	< 0.3 µm
Optical Characteristics	
Cutoff Wavelength	1230 nm
Peak Absorption @ 1530 nm	37 ± 3.0 dB/m
Mode Field Diameter @ 1550 nm	4.9 ± 0.7 µm
Numerical Aperture	0.26 ± 0.02
PM or SM	SM
Mechanical and Environmental	
Proof Test Level	2%
Order by Part Number	76178
OPTIONS: Fibers available in long lengths on standard spools, fibers available in predetermined lengths and coiled to given diameters, fibers available with natural or colored buffer, fibers may be customized to suit your specific application	

For additional information please contact your sales representative.

You can also visit our website at www.ofsoptics.com or call 1-888-fiberhelp (1-888-342-3743) USA or 1-770-798-5555 outside the USA.