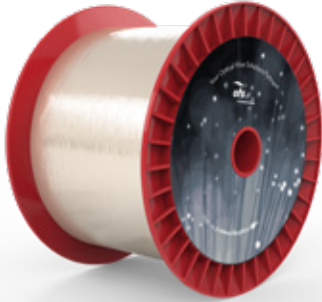




RightWave® Moderate EDF LP980 Optical Fiber

P/N: 76943



Product Specifications	
Product Description	RightWave Moderate EDF LP980 Optical Fiber
Physical Characteristics	
Cladding Diameter	125 μm
Coating Diameter	245 μm
Core Eccentricity	$\leq 0.3 \mu\text{m}$
Optical Characteristics	
Type	Erbium-Doped Fibers for ASE Sources
Cutoff Wavelength	960 nm
Peak Absorption @ 1550 nm	$5.5 \pm 1.0 \text{ dB/m}$
Mode Field Diameter @ 1550 nm	$4.3 \pm 0.7 \mu\text{m}$
Numerical Aperture	0.32 ± 0.02
PM or SM	SM
Mechanical and Environmental	
Proof Test Level	200 kpsi
Order by Part Number	76943

For additional information please contact your sales representative.

You can also visit our website at www.ofsoptics.com
or call 1-888-fiberhelp (1-888-342-3743) USA or 1-770-798-5555 outside the USA.



FURUKAWA
SOLUTIONS

Copyright © 2024 OFS Fitel, LLC.
All rights reserved, printed in USA.

OFS Marketing Communications
Date: 02/24

For a full list of
our certifications,
visit our website.



RightWave is a registered trademark of OFS Fitel, LLC. OFS reserves the right to make changes to the prices and product(s) described in this document at any time without notice. This document is for informational purposes only and is not intended to modify or supplement any OFS warranties or specifications relating to any of its products or services.