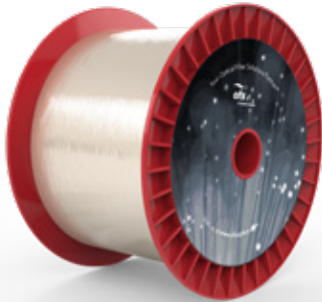




# ClearLite® 980 16 125/250 Optical Fiber

P/N: 86377 - BF05635-02



## Features

- Tight geometrical tolerances
- Excellent uniformity and consistency
- Low splice loss
- Dual layer acrylate
- High proof test level for mechanical reliability

## Typical Applications

- Fused Fiber and WDM Pump/Signal Couplers
- Optical Components, e.g. Laser Diode Pigtailed
- EDFAs

Product Specifications	
Product Description	ClearLite 980 16 125/250 Optical Fiber
Optical Characteristics	
Operating Wavelength	980 nm and 1550 nm
Cutoff Wavelength	≤ 960 nm
Mode Field Diameter @ 1550 nm	7.5 ± 0.75 μm
Mode Field Diameter @ 980 nm	5.0 ± 0.3 μm
Attenuation @ 1550 nm	≤ 0.5 dB/km
Attenuation @ 980 nm	≤ 3 dB/km
Numerical Aperture (Nominal)	0.16
Physical Characteristics	
Coating Material	Dual UV Acrylate
Cladding Diameter	125 ± 1 μm
Coating/Buffer Diameter	250 ± 15 μm
Clad Non-Circularity	≤ 2.0%
Core/Clad Offset	≤ 0.3 μm
Mechanical and Environmental	
Operating Temperature	-40 to +85 °C
Proof Test Level	≥ 200 kpsi (1.38 GPa)
Other Information	
Order by Part Number	<b>86377 - BF05635-02</b>
Product Description	<b>ClearLite 980 16 125/250</b>
Regulatory Compliance	REACH and RoHS Compliant
Quality Certification	ISO 9001 Certified

For additional information please contact your sales representative.

You can also visit our website at [www.ofsoptics.com](http://www.ofsoptics.com) or call 1-888-fiberhelp (1-888-342-3743) USA or 1-770-798-5555 outside the USA.



FURUKAWA SOLUTIONS

Copyright © 2024 OFS Fitel, LLC. All rights reserved, printed in USA.

OFS Marketing Communications Date: 02/24

For a full list of our certifications, visit our website.



ClearLite is a registered trademark of OFS Fitel, LLC. OFS reserves the right to make changes to the prices and product(s) described in this document at any time without notice. This document is for informational purposes only and is not intended to modify or supplement any OFS warranties or specifications relating to any of its products or services.