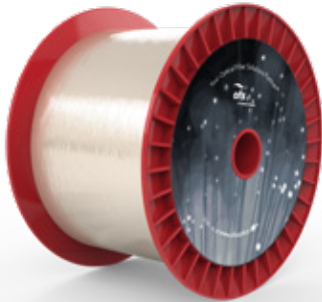


ClearLite® 980 20 80/165 Optical Fiber

P/N: 86379 - F10231



Features

- Tight geometrical tolerances
- Excellent uniformity and consistency
- Low splice loss
- Dual layer acrylate
- High proof test level for mechanical reliability

Typical Applications

- Fused Fiber and WDM Pump/ Signal Couplers
- Optical Components, e.g. Laser Diode Pigtailed
- EDFAs

Product Specifications

Product Description	ClearLite 980 20 80/165 Optical Fiber
Optical Characteristics	
Operating Wavelength	980 nm and 1550 nm
Attenuation @ 980 nm	≤ 3.0 dB/km
Attenuation @ 1550 nm	≤ 0.75 dB/km
Mode Field Diameter @ 980 nm	4.0 ± 0.3 μm
Mode Field Diameter @ 1550 nm	6.5 ± 0.3 μm
Cut-off Wavelength	≤ 960 nm
Macro Bending Loss @ 1550 nm, 10 turns, 10 mm bend radius	≤ 0.08 dB
Macro Bending Loss @ 1550 nm, 1 turn, 5 mm radius	≤ 0.1 dB
Numerical Aperture (Nominal)	0.21
Physical Characteristics	
Coating Material	Dual UV Acrylate
Cladding Diameter	80 ± 1 μm
Coating/Buffer Diameter	165 ± 15 μm
Clad Non-Circularity	≤ 2.0%
Core/Clad Offset	≤ 0.3 μm
Mechanical and Environmental	
Proof Test Level	200 kpsi (1.38 GPa)
Temperature Cycling (-60 to +85 °C) - IEC 60793	≤ 0.05 dB/km
High Temperature Aging - IEC 60793	≤ 0.05 dB/km
Min. Bend Radius, Estimate (5 turn, 20 year, IE-5 failure rate)	3 mm
Min. Bend Radius, Estimate, Mechanical Failure (5 meter, 20 year, IE-5 failure rate)	6 mm
Other Information	
Order by Part Number	86379 - F10231
Product Description	ClearLite 980 20 80/165
Regulatory Compliance	REACH and RoHS Compliant
Quality Certification	ISO 9001 Certified

For additional information please contact your sales representative.

You can also visit our website at www.ofsoptics.com or call 1-888-fiberhelp (1-888-342-3743) USA or 1-770-798-5555 outside the USA.