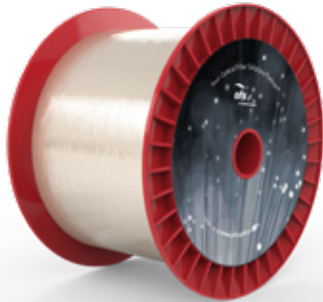


RightWave® EDF LRL 125/200 Optical Fiber

P/N: 87757



Overview

The RightWave EDF portfolio has a broad EDF product line with each fiber type optimized for different applications.

The LRL 125/200 Optical Fiber has optimized with respect to size through the use of a 200 μm dual acrylate coating. This reduces the volume in an amplifier by one third.

Product Specifications

Product Name	LRL 125/200
--------------	-------------

Optical Characteristics

Type	Erbium Doped Fiber for L-Band
------	-------------------------------

Core Properties

Cutoff Wavelength	< 1230 nm
-------------------	-----------

Mode Field Diameter @ 1550 nm	4.9 \pm 0.7 μm
-------------------------------	-----------------------------

Peak Absorption @ 1530 nm	30.0 \pm 3.0 dB/m
---------------------------	---------------------

Numerical Aperture	0.26 \pm 0.02
--------------------	-----------------

PMD (Typical)	\leq 2 fs/m
---------------	---------------

Physical Characteristics

Cladding Mean Diameter	125 μm
------------------------	-------------------

Core/Clad Concentricity Error	\leq 0.3 μm
-------------------------------	--------------------------

Coating Diameter	200 μm
------------------	-------------------

Mechanical and Environmental

Tensile Proof Test	1.38 GPa (200 kpsi)
--------------------	---------------------

Other Information

Order by Part Number	87757
----------------------	--------------

Product Name	LRL 125/200
--------------	--------------------

Regulatory Compliance	REACH and RoHS Compliant
-----------------------	--------------------------

Quality Certification	ISO 9001 Certified
-----------------------	--------------------

For additional information please contact your sales representative.

You can also visit our website at www.ofsoptics.com or call 1-888-fiberhelp (1-888-342-3743) USA or 1-770-798-5555 outside the USA.