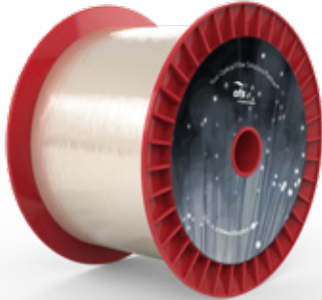


ClearLite® Poly 1310 11 NA Optical Fiber

P/N: BF04446



Overview

ClearLite Carbon Poly 1310 operates at 1310/1550 nm and has an NA of 0.11. The fiber has a polyimide coating for high-temperature resistance.

Typical Applications

High-Temperature
Environments

Medical Sensing and Imaging

Oil and Gas Applications

| Product Specifications | |
|-------------------------------------|---|
| Product Description | ClearLite Poly 1310 11 NA Optical Fiber |
| Physical Characteristics | |
| Coating Material | PYROCOAT® |
| Core Diameter (Nominal) | 8.4 µm |
| Cladding Diameter | 125 ± 1 µm |
| Coating/Buffer Diameter | 155 ± 5 µm |
| Clad Non-Circularity | ≤ 2.0% |
| Core/Clad Offset | ≤ 1.0 µm |
| Optical Characteristics | |
| Type | Single-Mode |
| Operating Wavelength | 1310/1550 nm |
| Cutoff Wavelength | ≤ 1290 nm |
| Mode Field Diameter @ 1310 nm | 9.3 ± 0.5 µm |
| Mode Field Diameter @ 1550 nm | 10.5 ± 1.0 µm |
| Attenuation @ 1310 nm | ≤ 0.7 dB/km |
| Attenuation @ 1550 nm | ≤ 0.6 dB/km |
| Numerical Aperture (Nominal) | 0.11 |
| Mechanical and Environmental | |
| Operating Temperature | -65 to +300 °C |
| Short-Term Bend Radius | ≥ 10 mm |
| Long-Term Bend Radius | ≥ 17 mm |
| Proof Test Level | ≥ 200 kpsi (1.38 GPa) |
| Order by Part Number | BF04446 |
| Product Description Code | SMT-A1310H |

OPTIONS: Buffer Color, Buffer Material, Buffer Size, Cutoff Wavelength, Metalization, Proof Test, Termination

NOTE: OFS polyimide optical fibers are known to operate in environments up to 300 °C. Performance is application dependent. Contact our Technical Sales department to discuss your specific application requirements. 1-860-678-6636

For additional information please contact your sales representative.

You can also visit our website at www.ofsoptics.com or call 1-888-fiberhelp (1-888-342-3743) USA or 1-770-798-5555 outside the USA.