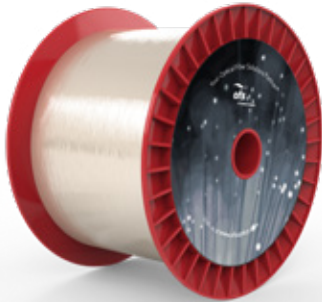


TruePhase® 1550 125/250 R5 Bend-Insensitive PM Optical Fiber

P/N: F77439



Features

- R5 Bend-insensitive (bending radius 5 mm), <math><0.1\text{ dB/turn}</math> @ 1550 nm
- Low beat length of $\leq 5\text{ mm}$
- High birefringence
- Tight geometrical tolerances
- Available with Standard Dual Layer, or High Temperature Coating
- Other options include 900 μm Hytel® or 900 μm PVC buffer

Overview

TruePhase® Bend-Insensitive Polarization-Maintaining (BI PMF) Optical Fiber for use in small bend radius applications that demand superior bending performance. At 1550 nm and at a very demanding 5 mm, the macro-bend induced loss of the fiber is less than 0.1 dB/turn.

The fiber is available with a standard communications grade, 250 μm dual layer UV acrylate coating.

TruePhase Optical Fibers utilize industry-standard stress applying parts (SAPs) to create two axes in the core, each of which guides light at a different velocity; a Panda design. This standard design allows for the use of easy splice recipes offered by the major fusion splicer manufacturers.

Typical Applications

Laser Pigtails
Photonic Integrated Circuits
Polarization-Sensitive Components
PMD Compensators
Polarizing Beam Splitters



PRELIMINARY

TruePhase® 1550 125/250 R5 Bend-Insensitive Polarization-Maintaining Optical Fiber

P/N: F77439

Product Specifications		
Product Description	TruePhase 1550 125/250 R5 Bend-Insensitive Optical Fiber	
Physical Characteristics		
Operating Wavelength	1550 nm	1625 nm
Cutoff Wavelength	< 1550 nm	< 1550 nm
Mode field diameter	9.9 ± 0.5 μm	10.3 μm
Attenuation	≤ 0.8 dB/km	≤ 2.5 dB/km
Beat Length	< 5 mm	≤ 5.5 mm
Crosstalk	≤ - 30 dB/100 m	≤ - 30 dB/100 m
Crosstalk typical	≤ - 35 dB/100 m	≤ - 35 dB/100 m
Crosstalk Under Bend	"≤ - 30 dB/100 m, 1 turn @ 5 mm radius ≤ - 30 dB/100 m, 10 turns @ 7.5 mm radius"	TBD
Macrobending Loss,	"≤ 0.1 dB, 1 turn @ 5 mm radius ≤ 0.1 dB, 10 turns @ 7.5 mm radius"	TBD
Optical Characteristics		
Cladding Diameter	125 ± 1 μm	
Core/Clad Concentricity Error	≤ 0.5μm	
Clad Non-Circularity	≤ 2.0%	
Coating Diameter	250 ± 10 μm	
Mechanical and Environmental		
Tensile Proof Test	200 kpsi (1.38 GPa)	
Order by Part Number	F77439	
Product Description	TruePhase 1550 125/250 R5 Bend-Insensitive Polarization Maintaining Fiber	
Regulatory Compliance	REACH and RoHS Compliant	
Quality Certification	ISO 9001 Certified	
Options	Cabling, Coating Material and Dimensions, Metallization, Optical Properties, Proof Test	
NOTE: Specifications in italics are estimates only.		

For additional information please contact your sales representative.

You can also visit our website at www.ofsoptics.com
or call 1-888-fiberhelp (1-888-342-3743) USA or 1-770-798-5555 outside the USA.



Copyright © 2024 OFS Fitel, LLC.
All rights reserved, printed in USA.

OFS Marketing Communications
Date: 01/24

For a full list of our certifications, visit our website.



TruePhase is a registered trademark of OFS Fitel, LLC. DuPont is a registered trademark of DuPont de Nemours. OFS reserves the right to make changes to the prices and product(s) described in this document at any time without notice. This document is for informational purposes only and is not intended to modify or supplement any OFS warranties or specifications relating to any of its products or services.