

Safety Instructions

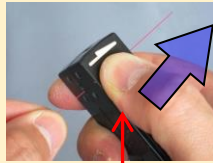
Before operating this product, please read the user's manual of safety instructions. The safety instructions are to help you use this product in a safe and correct way, and to prevent danger or injury to yourself or others.

Splicing Procedure

- ① Turn on power.
 - ② Select applicable program.
 - ③ Perform Arc Check.
※ Please see "Arc Check" for details.
 - ④ Insert protection sleeve.
 - ⑤ Prepare the fibers.
 - ⑥ Set fibers to the splicer.
 - ⑦ Press key.
 - ⑧ Remove spliced fiber.
 - ⑨ Slide protection sleeve over spliced point.
 - ⑩ Place fiber to heater.
 - ⑪ Press key.
 - ⑫ Remove the fiber.
- End.

< Fiber Preparation >

Stripping the fiber coating



Hold the fiber tightly. Then move S210 into the direction indicated by the arrow mark.

S210 Fiber Stripper

Fiber Cleaning



Lint-free tissue with ethanol

Fiber Cleaving

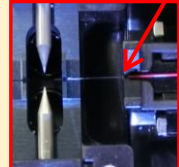
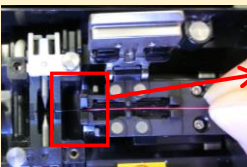


Single Fiber Adapter



Place fiber on Single Fiber Adapter. Press the lever.

Setting the fiber on the splicer



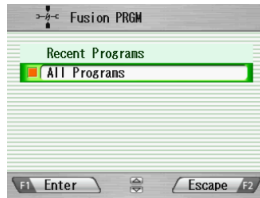
The edge of the fiber coating should match with the edge of the tight holder.

Procedure of Changing Program

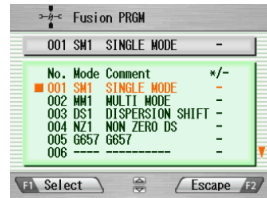
< Fusion Program >



Enter "Fusion PRGM" in menu.



Enter "All Programs".

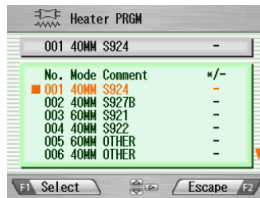


Select applicable fusion program.

< Heater Program >



Enter Heater PRGM in menu.



Select applicable heater program.

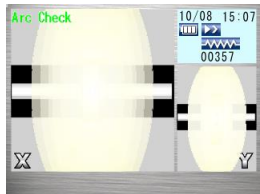
Arc Check

Arc Check is the function to adjust the arc power in order to ensure optimal splicing results. Electrode wear and environmental conditions such as temperature, humidity, and altitude, may affect the arc power.

Please perform the Arc Check at the beginning of each daily operation.



Open the windshield and set the fibers. Then enter "Arc Check".



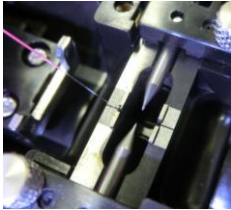
Splicer automatically feeds the fibers and discharges an arc.



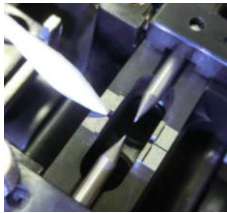
The results are indicated. If the results are negative, the machine will automatically adjust the arc power. Please perform the arc check again.

To ensure optimal splicing results

< Cleaning V-groove >

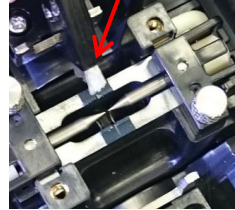


Run fiber across V-groove to remove dust in V-groove.



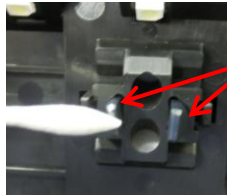
Clean V-groove by a cleaning brush and a cotton swab soaked with ethanol.

Cleaning brush



< Cleaning Fiber Clamp >

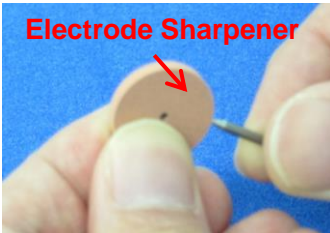
Clean Fiber Clamp by using cotton swab soaked with ethanol.



Fiber Clamp

Maintenance

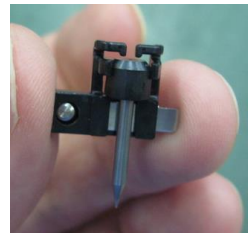
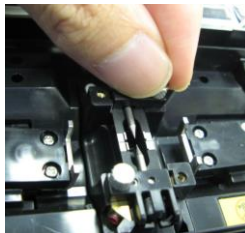
< Cleaning Electrodes >




Electrode Sharpener

Stick the tip of an electrode into the electrode sharpener and turn/twist the electrode 3-4 times.

< Replacement of Electrodes >



Loosen the screw and remove the lid of electrode. Then replace with a new one. After replacement, press the  key 10 times with closing windshield to remove the dust.

< Cleaning Lens Cover >



Lens Cover

Remove both electrodes and V-groove. Then clean Lens Cover by using cotton swab soaked with ethanol.

Operation Keys

Up/ Down/ Left/ Right Key

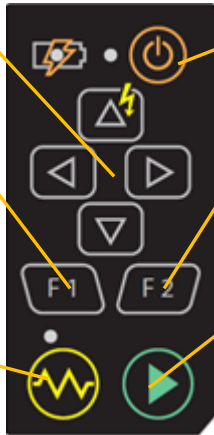
Move the cursor and change the value

Function 1 Key

Select the function shown on the right bottom corner of LCD.

Heating Key

Start/Stop the heating process



Power Key

Turn the power on/off.

Function 2 Key

Select the function shown on the left bottom corner of LCD.

Start Key

Start/Pause/Restart the splicing process

Screen Indication

Splice Process

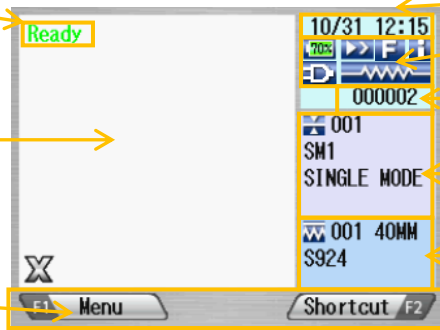
Ready

Fiber View

Current Function of Function Keys

F1 Menu

Shortcut F2



Date and Time

Status

Splice Count

Selected Splice program

Selected Heater program

Storage Space of Hard Carrying Case

Fusion Splicer

AC Power Cable

AC Adapter

Spare Electrodes

