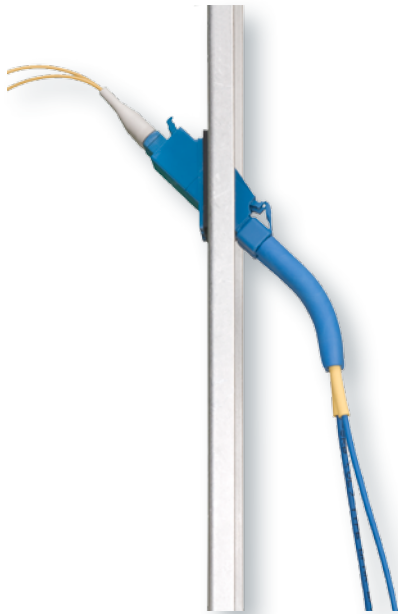




A Furukawa Company

## LC Connectors

One Exceptional Connector for Many Applications



### Features

- RoHS compliant
- Half the size of standard connectors
- RJ-style push-pull housing
- One-piece design
- Polarized
- Pull-proof for jumper
- PC finish
- Anti-snag latch for jumper and BTW
- Standards compliant
- Removable clips for both simplex and duplex connectors
- Pre-radiused connectors available for minimal polish
- Angled and short boots available for 1.6/2.0 mm cordage applications.

### Benefits

- Doubles density
- Disengages easily in dense spaces
- Helps assure high repeatability
- Maintains transmit/receive direction
- Maintains optical contact
- Helps minimize transmission problems
- Improves durability and reduces cross-connect rearrangement effort
- Pre-radiused LCs reduce installation time and costs of consumables.

### Applications

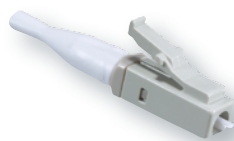
- Telecommunications networks
- Local area networks
- Data processing networks
- Cable television
- Fiber-to-the-home (FTTx)
- Premises distribution.

### Product Description

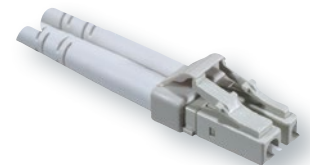
The LC Connector from OFS is available in several configurations to fit many applications. The LC is available for single-mode, multimode, and APC applications. The APC connector is designed to provide superior return loss without sacrificing insertion loss performance. The Unibody® jumper connector is available for both 1.6/2.0 mm cordages as well as 3 mm cordages. There are several cable support options for the Unibody connector for 1.6/2.0 mm cordages. Connectors can be ordered with a fully rotatable 42 degree angled boot for easier fiber management. For applications with space constraints, the LC Unibody can also be ordered with a short boot option. This short boot measures approximately 21 mm as compared to the standard cable support which is approximately 29 mm. The behind-the-wall (BTW) version is designed to mount on 0.9 mm buffered fiber. LC connectors are also available with pre-radiused ferrules. Using pre-radiused ferrules reduces polishing time and cuts the costs of consumables required. Pre-radiused connectors have more consistent end-face geometries, which result in more consistent optical performance.



Single-Mode and Multimode  
LC BTW Connectors



Simplex Single-Mode LC  
Unibody Connector



Duplex Multimode LC



A Furukawa Company

Ordering Information

Description	Jumper Connectors: 1.6 & 2.0 mm Comcode		Jumper Connectors: 3.0 mm Comcode		BTW Connectors Comcode	
	Standard Ferrule	Pre-Radiused Ferrule	Standard Ferrule	Pre-Radiused Ferrule	Standard Furrule	Pre-Radiused Ferrule
SM Simplex - 125.5 - 1	300473923	300473204	300473931	300473246	300474046	300473378
SM Simplex - 125.5 - 100	109167510	300473212	300415247	300473253	109095356	300472396
SM Simplex - 125.5 - 1000	109092817	300471174	300464716	300471190	300447281	300472404
SM Simplex - 126.0 - 1	109154559	300461670	108405382	300473287	107764300	300461662
SM Simplex - 126.0 - 100	109167528	300473147	300415288	300473170	108247420	300472370
SM Simplex - 126.0 - 1000	109047753	300471133	300473998	300471158	109026054	300472388
SM Duplex - 125.5 - 100	300409323	300473238	300415312	300473279	NA	NA
SM Duplex - 125.5 - 1000	NA	300471182	NA	300471208	NA	NA
SM Duplex - 126.0 - 1	108137605	300473154	300415296	300473188	NA	NA
SM Duplex - 126.0 - 100	108241969	300473162	300415403	300473196	NA	NA
SM Duplex - 126.0 - 1000	NA	300471141	NA	300471166	NA	NA
MM Simplex - 127.0 - 1	108064445	300461696	108405374	300474012	107764292	300461688
MM Simplex - 127.0 - 100	300429990	300473113	300415320	300474020	108247412	300472354
MM Simplex - 127.0 - 1000	109026062	300471091	300464690	300471117	109026047	300472362
MM Duplex - 127.0 - 1	108138678	300473121	108405408	NA	NA	NA
MM Duplex - 127.0 - 100	108241977	300473139	300415338	300474038	NA	NA
MM Duplex - 127.0 - 1000	109026039	300471109	300447307	300471125	NA	NA
APC Simplex - 125.5 - 100	109167478	NA	NA	NA	109167544	NA
APC Simplex - 125.5 - 1000	109122051	NA	NA	NA	109122069	NA
APC Simplex - 126.0 - 100	109167494	NA	300415353	NA	109167536	NA
APC Simplex - 126.0 - 1000	109148536	NA	NA	NA	109148742	NA

LC Kits and Consumables

Product	Description	Comcode
Tool Kit	1032B5	106705213
Upgrade Kit for LC	D182959	108262569
SM Consumable Kit (200 connectors)	D182983	108338591
MM Consumable Kit (200 connectors)	D182977	108340811
Universal Rubber Pad		300472644
Universal Polishing Kit (100 pre-radiused connectors)		300472651
1510 LC 3.0 Crimp Tool		300421013



A Furukawa Company

LC Field Mountable Connector Tuned Specifications

Specification	Value
Ferrule Diameter	125.5 μm
Cable Outside Diameter (OD)	0.9 mm BTW
Insertion Loss mean, standard (m,s) <sup>1</sup>	0.06 dB, 0.06 dB
Return Loss	55 dB
Mating Durability (Insertion Loss Change after 500 Reconnects)	< 0.2 dB
Temperature Stability	-40 °C to +75 °C
Insertion Loss Change	< 0.3 dB
Tip Material	Zirconia

<sup>1</sup> Complete connection concatenated statistics, 8.3/125 μm fiber, 62.5/125 μm fiber, dry connection

- This data was obtained through laboratory testing and simulated field environments.
- The performance is representative of all OFS multimode and single-mode LC connectors.

For additional information please contact your sales representative. You can also visit our website at [www.ofsoptics.com](http://www.ofsoptics.com) or call 1-888-fiberhelp (1-888-342-3743) USA or 1-770-798-5555 outside the USA.



Copyright © 2017 OFS Fitel, LLC. All rights reserved, printed in USA.

OFS Marketing Communications  
DOC: fap-115 Date: 07/17



Unibody is a registered trademark of OFS Fitel, LLC. OFS reserves the right to make changes to the prices and product(s) described in this document at any time without notice. This document is for informational purposes only and is not intended to modify or supplement any OFS warranties or specifications relating to any of its products or services.