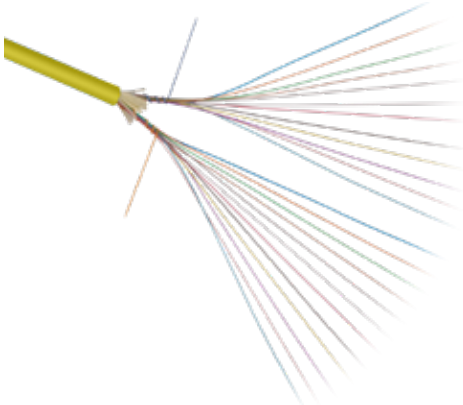
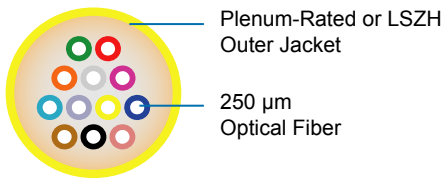


M-Pack® Backbone Cable

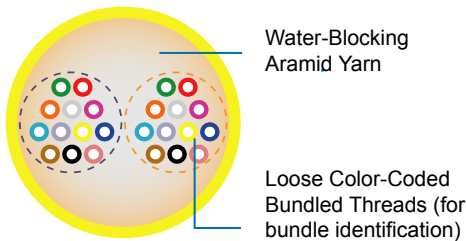
Versatile Design Enhanced for Data Centers, Central Office and FTTB Applications



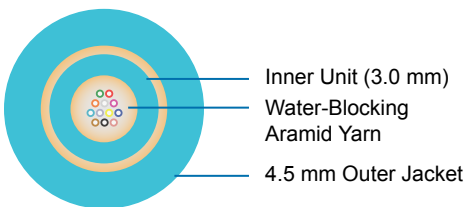
M-Pack BackBone Cable



12-Fiber Cable
(MB30) 3.0 mm



24-Fiber Cable
(MB38) Plenum or LSZH 3.8 mm
(MK54) LSZH Only 5.4 mm



12-Fiber Cable
(MKDJ) Double Jacket LSZH 4.5 mm

Features

- Compact, lightweight cable rated for Horizontal Backbone applications
- UV-stabilized design approved for Indoor/Outdoor use
- Plenum rating (OFNP) or LSZH for routing through a broad range of deployment spaces
- 3.0, 3.8, 4.5 or 5.4 mm outer diameter (OD)
- Fiber counts 2-24

Benefits

- Small outer diameter offers more efficient cable management in ladder racking
- Indoor/Outdoor capability allows routing between buildings
- Versatile cable design suitable for a wide range of applications

Product Description

The M-Pack BackBone Cable uniquely combines ratings for plenum, horizontal backbone and indoor/outdoor use to create a truly versatile design. UV-resistant jacket materials (OFNP rated), water-blocking aramids and high tensile fibers together produce a robust cable that delivers excellent performance in short routing outdoor spaces.

Why the M-Pack Backbone Cable?

With its versatile design and excellent performance, the M-Pack BackBone Cable can be installed at virtually any point in a network. While this cable's extra-small footprint helps to improve routing in today's data centers and central offices, it also meets stringent Telcordia GR-409 or ICEA-596 standards for horizontal applications (typically using ladder racking). This cable offers reduced cable congestion, high crush resistance and superior fibers to help create the next generation of cabling solutions.

In addition, the new low smoke, zero halogen (LSZH) versions of the M-Pack Backbone Cable offer improved CPR ratings. These cables include a 12-fiber double jacket 4.5 mm design (MKDJ) and a 24-fiber single jacket design (MK54).

Available in a wide range of OFS fibers to meet the needs of your specific application, the durable, compact M-Pack BackBone Cable is ideal for Data Centers, Central Offices, backbone installations and MPO connector terminations. The indoor/outdoor version, paired with EZ-Bend® optical fiber, is well suited for FTTx applications.

Specifications	MB30					MB38		MKDJ	MK54
Version	B					A		B	C
Fiber Count	2	4	6	8	12	16	24	2-12	24
Outer Diameter - in. (mm)	0.12 (3.0)	0.12 (3.0)	0.12 (3.0)	0.12 (3.0)	0.12 (3.0)	0.15 (3.8)	0.15 (3.8)	0.18 (4.5)	0.21 (5.4)
Weight - lb/kft (kgm/km)	5.6 (8.1)	5.8 (8.6)	6.0 (8.9)	6.1 (9.1)	6.5 (9.7)	8.8 (13.1)	9.5 (14.2)	15.2 (22.7)	19.2 (28.7)
Maximum Tensile lb (N)	100 (440)	100 (440)	100 (440)	100 (440)	100 (440)	150 (660)	150 (660)	100 (440)	150 (660)
Handling Temperature	Installation: -4 °F to 140 °F (-20 °C to 60 °C) Operation: -4 °F to 158 °F (-20 °C to 70 °C) Storage: -40 °F to 158 °F (-40 °C to 70 °C)								
Jacket Material	Plenum or LSZH					Plenum or LSZH		Plenum or LSZH	Plenum or LSZH
CPR Rating	LSZH Versions: Cca-s1a, d0, a1					Dca-s1, d1, a1		B2ca-s1a, d1, a1	B2ca-s1a, d1, a1
DoP Lookup: www.ofs-sales.com/cpr/	MB30-XXX-B-H (XXX = Fiber Count)					MB38-XXX-A-H		MKDJ-012-B-H	MK54-024-C-H

Performance Standard

The M-Pack Backbone Cable meets all or portions of Telcordia GR-409 Horizontal Backbone/ICEA-S-83-596/ICEA-S-104-696/ICEA-S-115-730 and TIA-568. Plenum-rated cables are UL® listed as compliant with NEC® Article 770 as Type OFNP. LSZH-rated cables are CPR rated.

Fiber Type ²					
Code	Single-Mode Descriptor	Grade	1310 nm (dB/km)	1550 nm (dB/km)	MCA (Z)
W	AllWave FLEX+ ZWP Bend-Optimized Optical Fiber	G.657.A2	0.4	0.3	4
9	AllWave FLEX Max Bend-Optimized Optical Fiber	G.657.B3 & G.652.D	0.4	0.3	4
D	EZ-Bend Ultra-Bend Insensitive Optical Fiber	G.657.B3	0.4	0.3	4
Code	Multimode Descriptor	Grade	850 nm	1300 nm	MCA (Z)
K	LaserWave® FLEX G+ Optical Fiber	OM2	3.5	1.5	G
3	LaserWave FLEX 300 Optical Fiber	OM3	3.5	1.5	G
5	LaserWave FLEX 550 Optical Fiber	OM4	3.5	1.5	G
4	LaserWave FLEX 550 WideBand Optical Fiber	OM5	3.5	1.5	G

M-Pack Backbone Cable Ordering Information		
Example: MB30-012A-9PY-4-12-IO ¹		
Part Number: MBNN - NNN A - W X Y - Z - U - V		
MB = M-Pack Backbone Cable	W = Fiber Type (see chart)	Z = Maximum Cable Attenuation (MCA) (see chart)
MK = M-Pack Backbone LSZH Cable	X = Jacket Material (Flame Retardant) P = Plenum Rated OFNP H = LSZH	U = Fibers per Unit 01, 02, 04, 06, 08, 12, 16, and 24
NN = Cable Size 30 = 3.0 mm 38 = 3.8 mm DJ = 4.5 mm 54 = 5.4 mm	Y = Jacket Color ² K = Black (IO) Y = Yellow (IN) O = Orange (IN) W = White (IO) A = Aqua (IN) L = Lime (IN)	V = Application IO = Indoor/Outdoor IN = Indoor
NNN = Fiber Count 002-024		
A = Version Letter. Contact OFS.		

¹ Part Number shown is for an M-Pack BackBone Plenum-Rated Cable with 12 AllWave FLEX Max ZWP Single-Mode Fibers and standard cable print. OFS M-PACK® ALLWAVE® FLEX MAX ZWP BIF G.657.B3 & G.652.D OPTICAL CABLE -C- MB30-012A-9PY-4-12-IO 9/125 FT6 C(UL) OFNP {MM/YY} {Lot No} {LENGTH IN FEET}

² Contact OFS Order Management for information on other cable variations, including additional fiber types, attenuation and custom cable print.

For additional information please contact your sales representative.

You can also visit our website at www.ofsoptics.com or call 1-888-fiberhelp (1-888-342-3743) USA or 1-770-798-5555 outside the USA.



Copyright © 2020 OFS Fitel, LLC.
All rights reserved, printed in USA.

OFS Marketing Communications
Doc ID: prem-236 Date: 09/20



M-Pack, AllWave, LaserWave and EZ-Bend are registered trademarks of OFS FITEL, LLC. OFS reserves the right to make changes to the prices and product(s) described in this document at any time without notice. This document is for informational purposes only and is not intended to modify or supplement any OFS warranties or specifications relating to any of its products or services.